

PREMIUM CONTROLS POWERED BY SW SUN CONTROL

SURFACE MOUNTED CONTROL

1 Channel
4 Channel

TECHNICAL DATA

Dimensions (inches)	3.14 x 3.14 x .55
Weight (lbs)	.12
Power Supply	3V Lithium Battery
Battery Life	2 Year
Frequency	434.15 MHz
Remote Range (feet)	65



PROGRAMMING SURFACE MOUNTED CONTROL

1 channel and 4 channel surface mounted controls enable the user to control one or more motors with receiver, installed on awnings and screens. It is possible to set them up in order to create group commands and let more motors work simultaneously. The radio signal is shown by the transmission LED. If the LED doesn't blink after the button pressure, then the battery has to be replaced.

CAUTION: Please don't use these transmitters in areas with risks of radio disturbs over the norm (i.e. airports or radio repeaters). These transmitters may also be disturbed by telecommunication and/or transceiver systems with the same frequency.

WALL INSTALLATION (Fig. 2)

- Fix the support at the wall by 3 screws (not included).
- Mount the mask at the transmitter lightly pressing until you hear a "click".
- Let the transmitter pass along the rails of the wall support.
- If you want to fix the transmitter to the wall support, use the screw in the box.

PROGRAMMING SURFACE MOUNTED CONTROL

CAUTION: If more motors with receiver have to be installed, it is important to power up only one motor at time during the first programming session, in order to avoid any interferences with the others.

- Power up the motor to be programmed.
- Hold **PROG-TX** pressed until the motor starts moving.
- Check the rotation of the motor, then release **PROG-TX** (the motor stops).
- Within 5 seconds press the corresponding button (i.e. **UP** if the motor rotates upwards or **DOWN** if vice versa).

In this way the remote has been programmed and the rotation of the motor has been synchronized.

ADDING SURFACE MOUNTED CONTROL

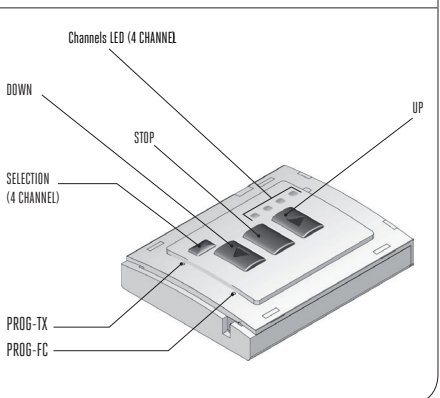
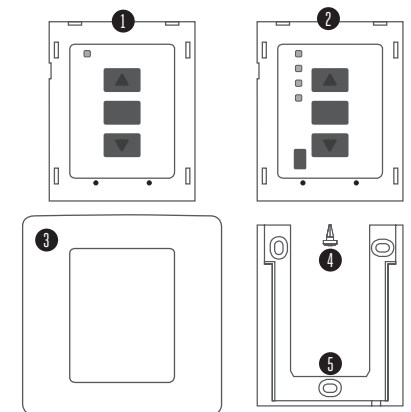
- Hold **PROG-TX** pressed of a remote already programmed until the motor starts moving.
- Check the rotation of the motor, then release **PROG-TX** (the motor stops).
- Within 5 seconds press the corresponding button (i.e. **UP** if the motor rotates upwards or **DOWN** if vice versa) on the new surface mounted control being added.

In this way the new surface mounted control has been added and programmed and the rotation of the motor has been synchronized.

CHECKING/CHANGING DIRECTION

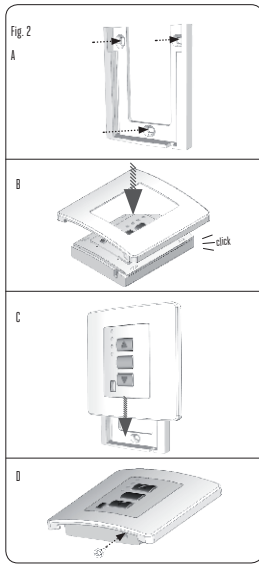
- Press **UP** or **DOWN** the motor should go **UP** or **DOWN**, otherwise to change direction:
- Press and hold **PROG-TX** button till the motor starts moving.
- Press **STOP**: The motor makes a brief jog. Direction of the motor has been reversed.

Fig. 1
1. 1 CHANNEL SURFACE MOUNTED control
2. 4 CHANNEL SURFACE MOUNTED control
3. Frame
4. Fixing screw
5. Wall support



PREMIUM CONTROLS POWERED BY SW SUN CONTROL

PROGRAMMING REMOTES CONT.



ERASING Remotes

Push simultaneously **PROG-TX** and **STOP** of the surface mounted control until the motor makes a brief movement in both directions.

Only the surface mounted control used for this procedure has been deleted from motor memory.

RESET SURFACE MOUNTED CONTROL MEMORY (DELETING ALL THE SURFACE MOUNTED CONTROLS OR CHANNELS OR SENSORS)

Option 1

Using an already programmed surface mounted control press and hold both **PROG-TX** and **STOP** buttons until the motor makes first a brief jog and, after a while, a second long jog.

Memory is now empty.

Option 2

1. Without an already programmed surface mounted control switch the motor power supply **OFF**. Then switch it **ON**.

2. Within 8 seconds, using any surface mounted control, press and hold both **PROG-TX** and **STOP** buttons until the motor makes a long jog.

Memory is now empty.

LIMIT SWITCH SETUP

(ATTENTION: Just for motors with electronic limit switch).

ALWAYS SET THE UP LIMIT SWITCH FIRST.

1. Push **PROG-FC** until the motor makes a brief movement in both directions

Note: during "programming mode" the operations are in "deadman control"

2. Press and hold the **UP** button and run the motor to the desired **UP** limit position.

3. Press **STOP** to set the **UP** limit position.

The motor makes a brief jog.

4. Press and hold the **DOWN** button and run the motor to the desired **DOWN** limit position.

5. Press **STOP** to set the **DOWN** limit position.

The motor makes a brief jog.

Note: Accurate limit setting can be performed when UPWARD or DOWNWARD by pressing a second time PROG-FC: the motor then moves slowly in steps towards to the desired limit. Always press STOP button to set the limit position.

AUTOMATIC SETTING OF THE LIMITS

For limits set with torque sensor (mechanical stop of cassette awnings/shades), press and hold **UP** button until the bottom bar hits the cassette or shade box.

A short jog will indicate that the **UP** position has been memorized. The same procedure can be followed for **DOWN** limit but only for roller shades.

INTERMEDIATE POSITION SETUP

Stop the shade/awning in the desired intermediate position, then press simultaneously the **UP** and **DOWN** buttons until the motor makes a brief movement in both directions.

The intermediate position has been setup.

RECALLING THE INTERMEDIATE POSITION

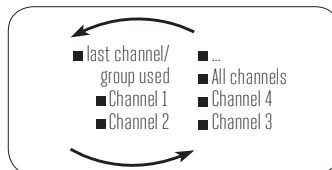
Keep the **STOP** button pressed at least for 3 seconds: the shade/awning will move till it reaches the intermediate position.

ERASING THE INTERMEDIATE POSITION

Press simultaneously the **UP** and **DOWN** buttons until the motor makes a brief movement in both directions.

CHANNEL MANAGEMENT (4 Channel)

By pressing **SELECTION**, you pass through the channels sequentially in this order:



Once the desired channel selected, you can proceed to activate the corresponding motor by using **UP**, **STOP** and **DOWN** buttons. Moreover, you can also memorize up to 8 combinations of groups of channels.

CREATING A GROUP OF CHANNELS

1. Select by **SELECTION** the first channel to which you will add the rest.

2. Press and hold **SELECTION** until the next channel's LED starts to flash.

3. By **SELECTION** select the channel to be added.

4. To confirm the channel to be added hold **SELECTION**. The channel LED will stop flashing and remain lit then the next channel starts to flash.

Continue this sequence until all the desired channels are added. To memorize the group press **STOP** or wait that the LEDs turn off.

SELECTING A MEMORIZED GROUP OF CHANNELS

With all the LEDs off, press **SELECTION** and hold: the channels of the last group created will turn on.

By pressing **SELECTION** again you pass through the memorized groups.

By selecting the desired group you can activate the motors by **UP**, **STOP**, **DOWN**.

IMPORTANT: you can select the 8 last memorized combinations.

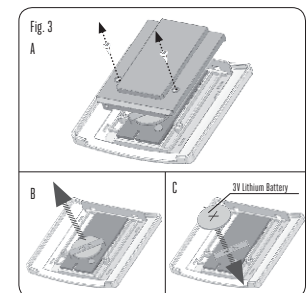
The memorization of further groups will require to delete the already memorized channels starting from the oldest.

BATTERY SUBSTITUTION Fig. 3

A. Remove the 2 screws on the back and the cover.

B. Remove the old battery

C. Insert the new battery respecting the correct polarity



IMPORTANT: Batteries contain polluting substances. After removing, throw them in the designated batteries collection points.